

Exploring

Japan

A Land of Culture and Innovation





Introduction Japan

Osaka Castle Park

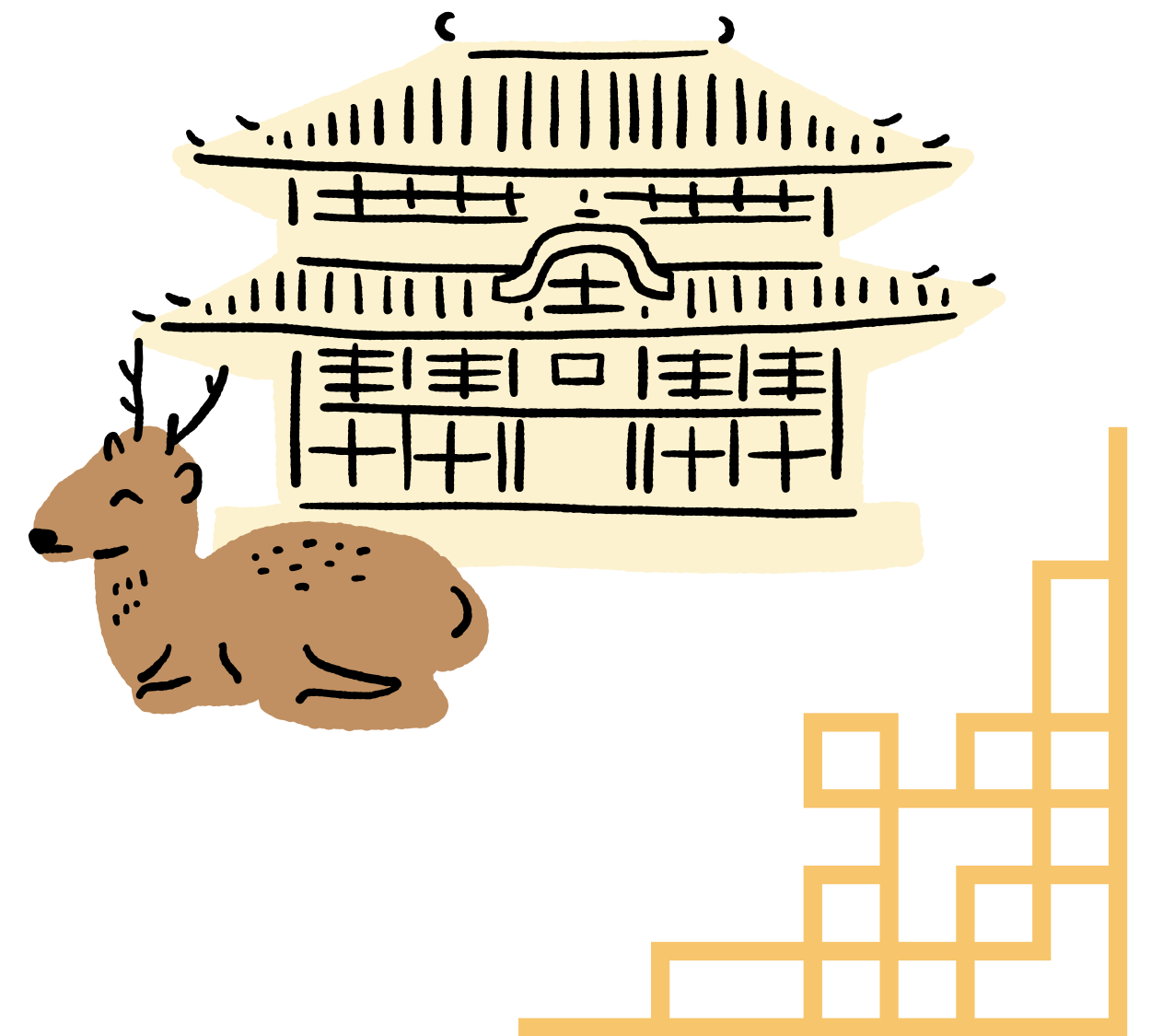
Nestled in the heart of Osaka, Osaka Castle Park surrounds the city's iconic fortress with vast lawns, seasonal flower gardens, and scenic moats. Visitors can enjoy cherry blossoms in spring, vibrant foliage in autumn, and panoramic views of the castle's majestic towers. The park offers a peaceful retreat, blending nature with rich samurai-era history.

Shinsaibashi

Shinsaibashi is Osaka's most famous shopping district, a lively stretch lined with trendy boutiques, department stores, and unique local shops. Whether you're hunting for the latest fashion, savoring street food, or simply soaking in the neon-lit atmosphere, Shinsaibashi captures the energetic spirit of the city both day and night.

Nara Deer Park

Located in the historic city of Nara, Nara Deer Park is home to hundreds of free-roaming, friendly deer, considered sacred messengers in the Shinto tradition. Visitors can stroll through scenic parklands, feed the deer special crackers known as shika senbei, and explore nearby UNESCO World Heritage sites, including Todai-ji Temple and Kasuga Taisha Shrine. The park offers a unique blend of natural beauty, cultural heritage, and charming wildlife encounters



Kyoto

Yasaka Shrine & Gion

Yasaka Shrine, located in the heart of Kyoto, is one of the city's most beloved Shinto shrines, famous for its vivid vermilion gates and lantern-lit evenings. It is especially lively during the Gion Matsuri, one of Japan's most celebrated summer festivals. Just steps away lies Gion, Kyoto's historic geisha district, where traditional wooden machiya houses, tea houses, and narrow cobblestone streets evoke the charm of old Japan. Strolling through Gion at dusk offers a timeless glimpse into Kyoto's cultural soul.



Kyoto

1. Nijo Castle

A UNESCO World Heritage site, Nijo Castle was built in the early 17th century as the Kyoto residence of the Tokugawa shoguns. Known for its ornate interiors, beautifully painted sliding doors, and the famous “nightingale floors” that chirp when walked upon, the castle is surrounded by tranquil gardens that showcase seasonal beauty throughout the year.

2. Kiyomizu-dera Temple

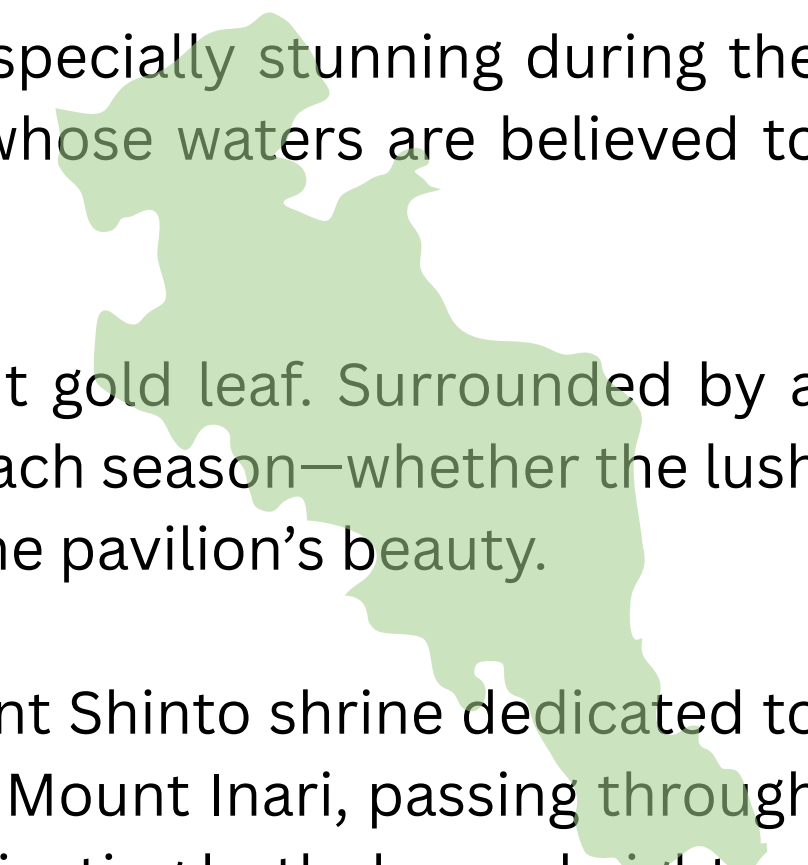
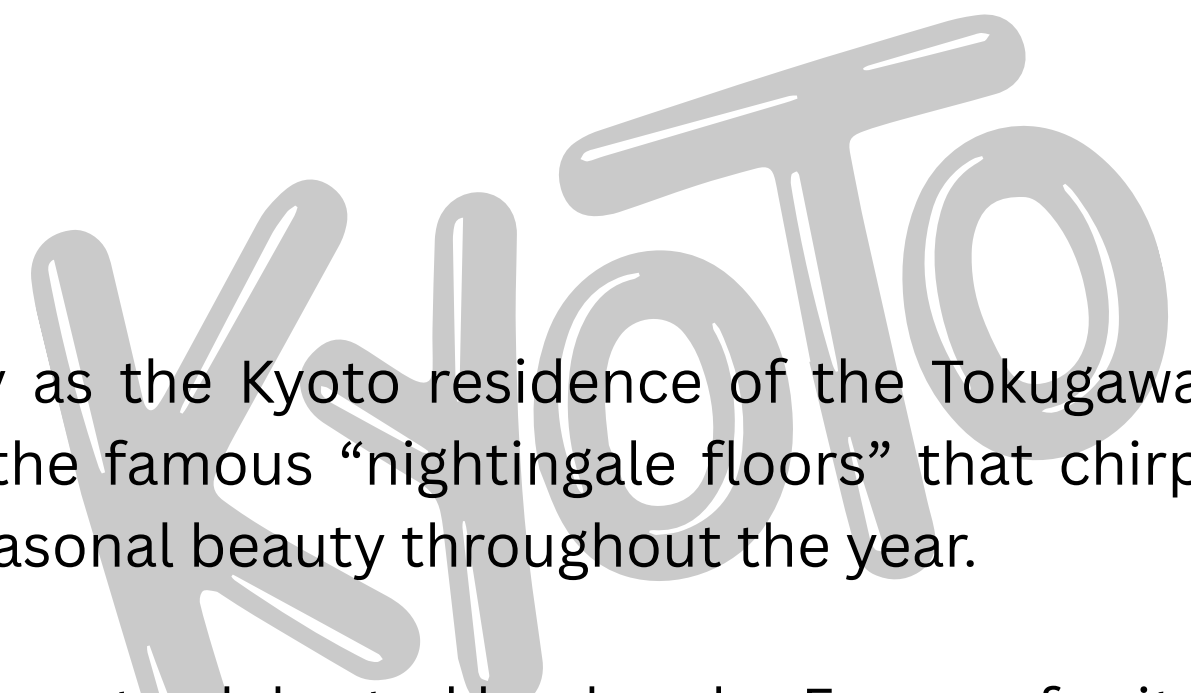
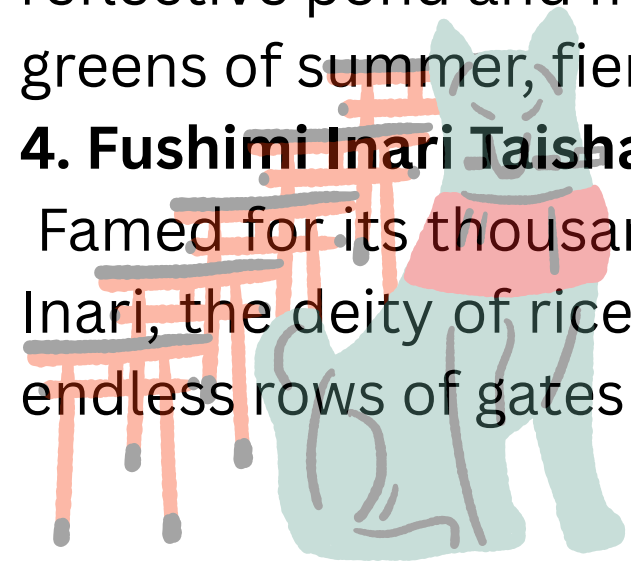
Perched on a hillside overlooking Kyoto, Kiyomizu-dera Temple is one of Japan’s most celebrated landmarks. Famous for its wooden stage that offers sweeping views of the city and surrounding nature, the temple is especially stunning during the cherry blossom and autumn foliage seasons. It is also associated with the Otowa Waterfall, whose waters are believed to grant health, longevity, and success.

3. Kinkaku-ji (Golden Pavilion)

Kinkaku-ji, officially known as Rokuon-ji, is an iconic Zen Buddhist temple covered in brilliant gold leaf. Surrounded by a reflective pond and manicured gardens, it offers one of the most photogenic scenes in Kyoto. Each season—whether the lush greens of summer, fiery autumn leaves, or snow-covered winter views—adds its own charm to the pavilion’s beauty.

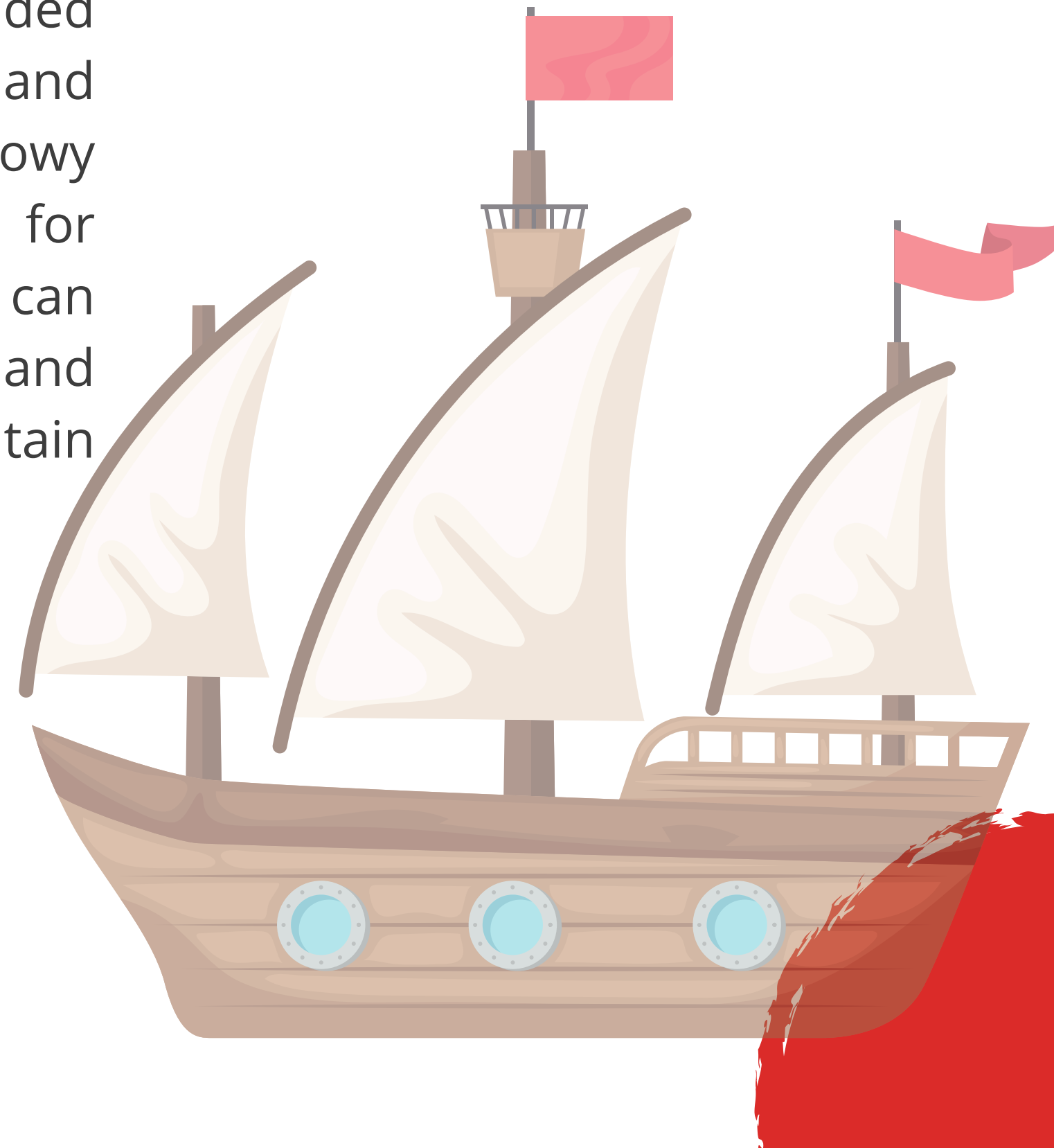
4. Fushimi Inari Taisha

Famed for its thousands of vibrant red torii gates, Fushimi Inari Taisha is Kyoto’s most important Shinto shrine dedicated to Inari, the deity of rice, prosperity, and business. Visitors can hike the scenic trails that wind up Mount Inari, passing through endless rows of gates and small shrines along the way. The shrine’s mystical atmosphere is captivating both day and night.



Mt. Fuji & Lake Kawaguchi

Lake Kawaguchi, one of the Fuji Five Lakes, offers some of the most breathtaking views of Japan's iconic Mt. Fuji. Surrounded by seasonal beauty—from cherry blossoms in spring and lavender fields in summer to vibrant autumn leaves and snowy winter landscapes—the lake is a year-round destination for photography, relaxation, and outdoor activities. Visitors can enjoy lakeside walks, boat cruises, hot spring baths, and charming cafés, all while gazing at the majestic mountain reflected in the water.



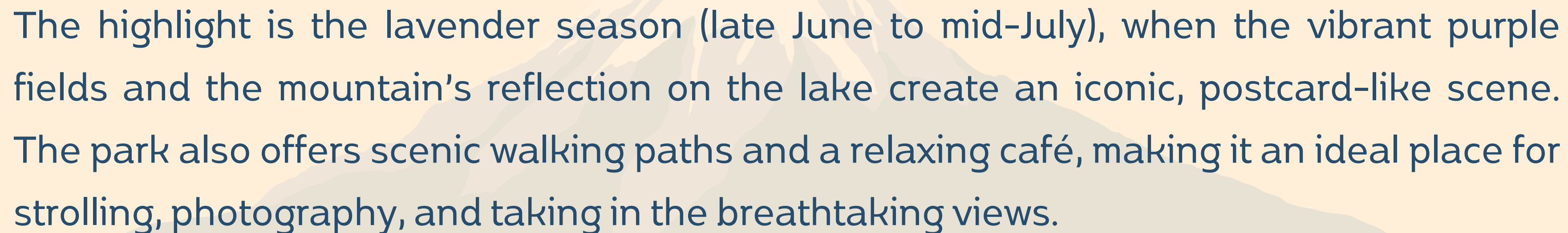


Ōishi Park



Located on the northern shore of Lake Kawaguchi, Ōishi Park is one of the best spots to enjoy views of both Mount Fuji and the lake. The park features vast flower fields that bloom throughout the year: pink moss phlox in spring, lavender in summer, colorful autumn foliage, and snowy landscapes in winter—all set against the backdrop of Mount Fuji.

The highlight is the lavender season (late June to mid-July), when the vibrant purple fields and the mountain's reflection on the lake create an iconic, postcard-like scene. The park also offers scenic walking paths and a relaxing café, making it an ideal place for strolling, photography, and taking in the breathtaking views.



Tokyo Disneyland

Tokyo Disneyland is a world-class theme park that brings the magic of Disney to life with thrilling attractions, colorful parades, and beloved characters. Divided into themed lands such as Adventureland, Fantasyland, and Tomorrowland, the park offers experiences for visitors of all ages—from exciting rides and live shows to seasonal events and dazzling fireworks. With its enchanting atmosphere and meticulous attention to detail, Tokyo Disneyland delivers a truly unforgettable day of fun and wonder.



Tokyo National Museum

The Tokyo National Museum, located in Ueno Park, is Japan's oldest and largest museum. Established in 1872, it houses a collection of over 110,000 items, including numerous National Treasures and Important Cultural Properties.

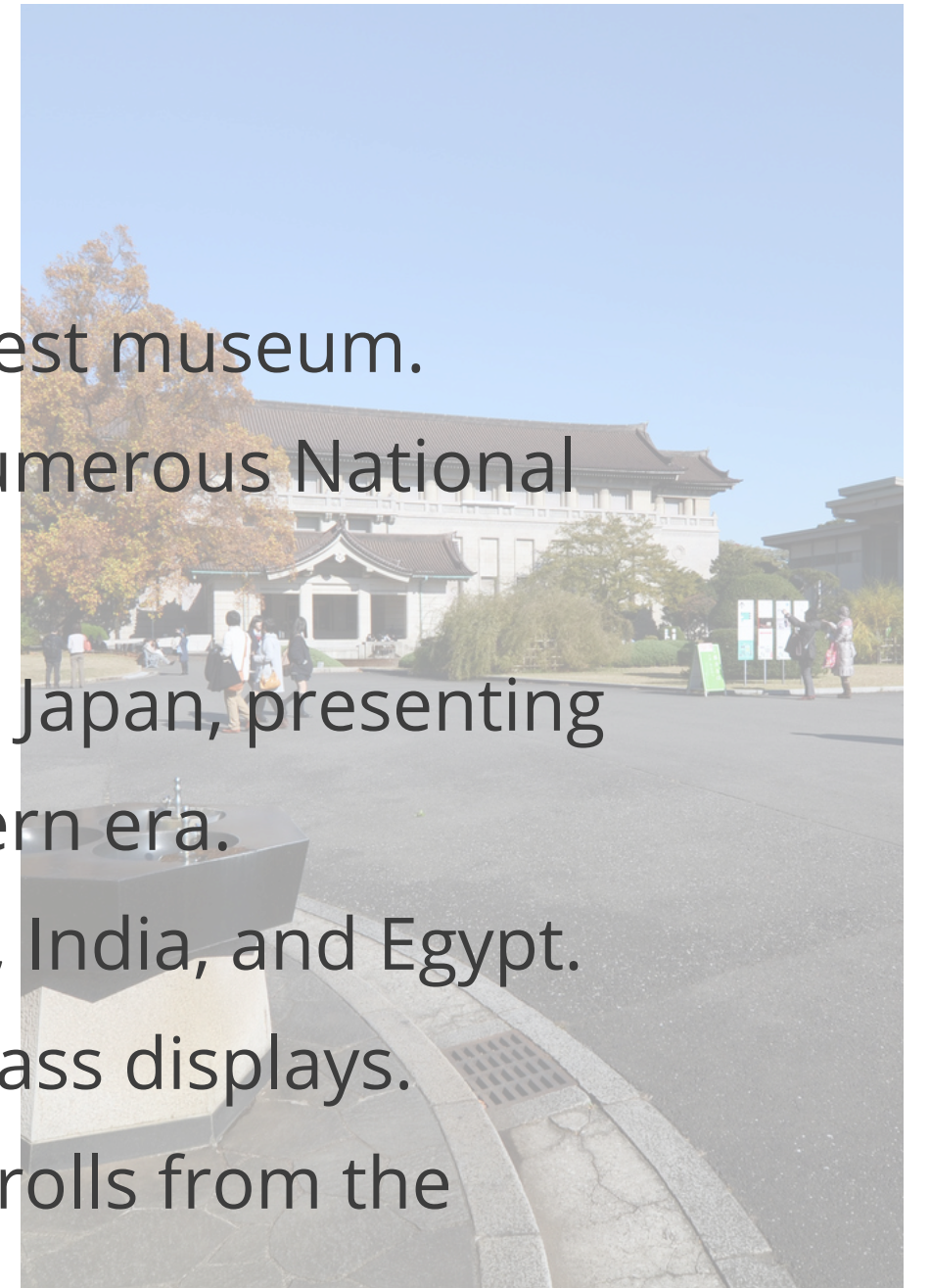
Honkan (Japanese Gallery): Exhibits archaeological artifacts and fine art from Japan, presenting a comprehensive view of the nation's history from ancient times to the modern era.

Toyokan (Asian Gallery): Features artworks from across Asia, including China, India, and Egypt.

Heiseikan: Hosts special and thematic exhibitions, often showcasing world-class displays.

Collection Highlights: Buddhist statues from the Kamakura period, picture scrolls from the Heian period, and treasures inspired by the Shōsōin repository of Nara.

Visitors can not only appreciate the full panorama of Japanese artistic development but also gain insights into the broader cultural exchanges within East Asia.



Favorite Destinations

Tokyo Tower

Located in Minato City, Tokyo, Tokyo Tower is one of the city's landmark structures, standing 333 meters tall.

History & Significance: Completed in 1958 and inspired by the Eiffel Tower in Paris, it symbolizes Japan's postwar reconstruction and also serves as a broadcasting tower.

Main Deck (150m): Offers panoramic views of central Tokyo, Tokyo Bay, and, on clear days, even Mount Fuji.

Entertainment Facilities: Inside the tower is the "FootTown" complex, featuring restaurants, souvenir shops, a 4D theater, and more.



Conclusion

Japan's charm lies in its harmonious blend of past and present. Its unique culture, breathtaking landscapes, and technological achievements continue to make it a standout destination on the global stage. For those seeking inspiration, adventure, or serenity, Japan offers an unforgettable experience.

Japan

