



# Embark on the Path of Fuji's Faith

A One-Day Journey to Mt. Fuji



# Introduction

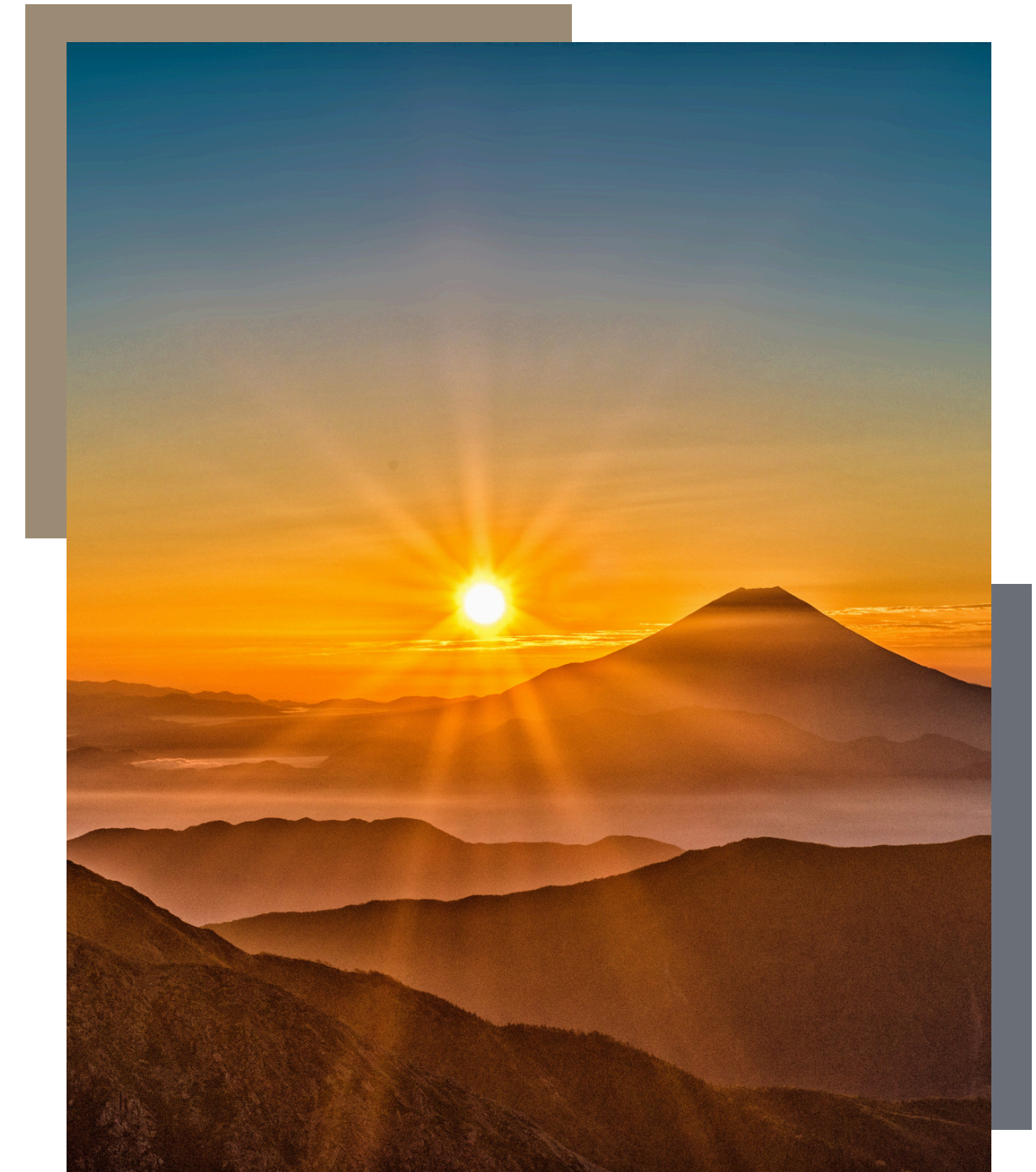
Mt. Fuji, located in central Honshu, is Japan's highest peak at 3,776 meters. It's a UNESCO World Cultural Heritage site and a symbol of Japan.

Tour Overview: Join us on a spiritual and scenic exploration of Mt. Fuji, following the path of faith and culture that has inspired pilgrims for centuries. This carefully curated one-day journey will take you to sacred shrines, breathtaking viewpoints, and charming streets rich in history. Experience the deep connection between nature and spirituality as you immerse yourself in the beauty of Japan's most iconic mountain, and feel both the beauty and power of this majestic peak.



# Beautiful Mountains

- **Summer** (July to early September): Climbing season, with no snow at the summit and ideal conditions for trekking.
- **Spring** (March to May): Cherry blossoms in full bloom, offering picturesque views of Mt. Fuji and sakura.
- **Autumn** (October to November): Vibrant autumn foliage paints the landscape in brilliant colors.
- **Winter** (December to February): Snow-covered Mt. Fuji is breathtaking, especially for photography enthusiasts, though the summit is too cold for climbing.





# Itinerary:

Page 04

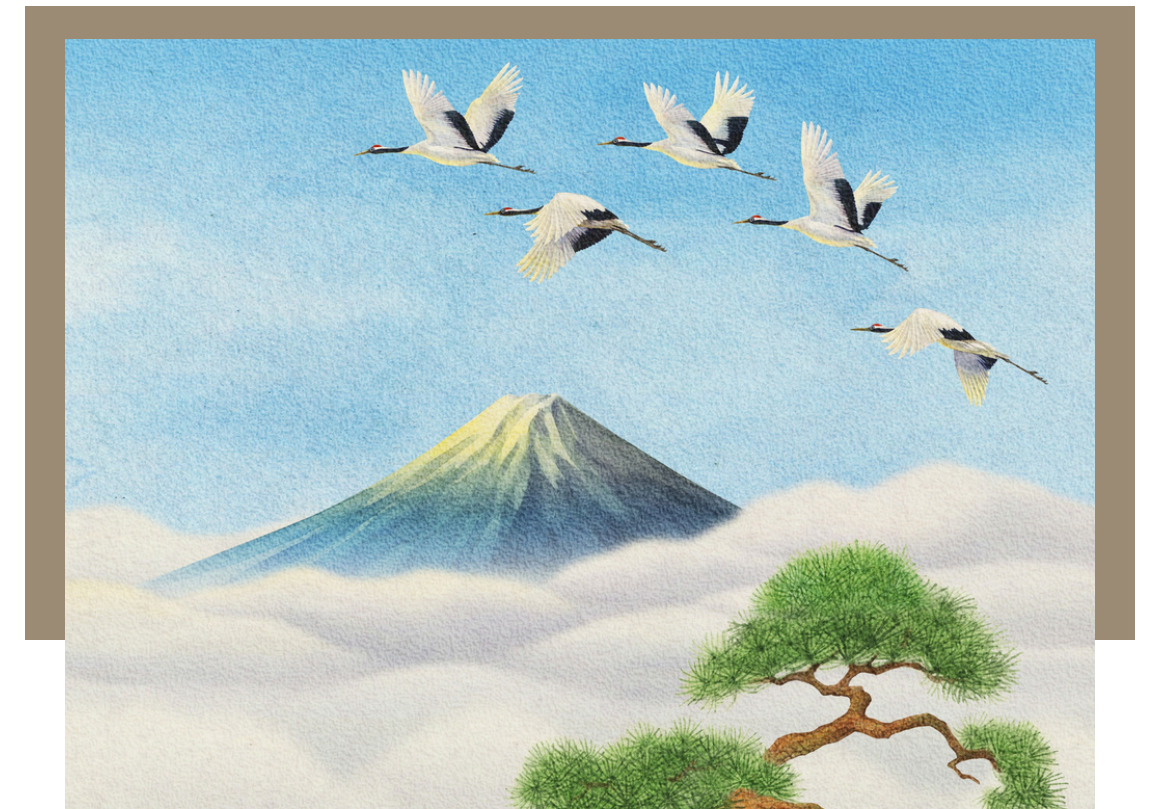


## 8:00 AM - Departure from Tokyo

Meet your guide and fellow travelers at the designated meeting point in Tokyo. Board a comfortable coach and enjoy a relaxing ride towards Mt. Fuji, passing through picturesque countryside landscapes.

## 10:00 AM - Arakura Sengen Shrine & Sengen Park

Embark on the Path of Fuji's Faith at Shinkurayama Asama Park—a renowned hotspot where the panoramic splendor of Mt. Fuji unfolds before your eyes. Celebrated as one of the “21 Must-Visit Places for Photographers Worldwide,” this destination beckons adventurers and artists alike. Climb the 398 steps near the main shrine to capture an awe-inspiring vista that unites the majestic Mt. Fuji with the picturesque townscape below. Whether adorned with spring cherry blossoms, lush summer greens, vibrant autumn leaves, or a serene winter snowfall, the scenery here transforms with every season. Beyond the breathtaking views of Mt. Fuji, you can also gaze upon the charming urban landscape of Fujiyoshida—a true testament to the enduring spirit of this sacred journey.



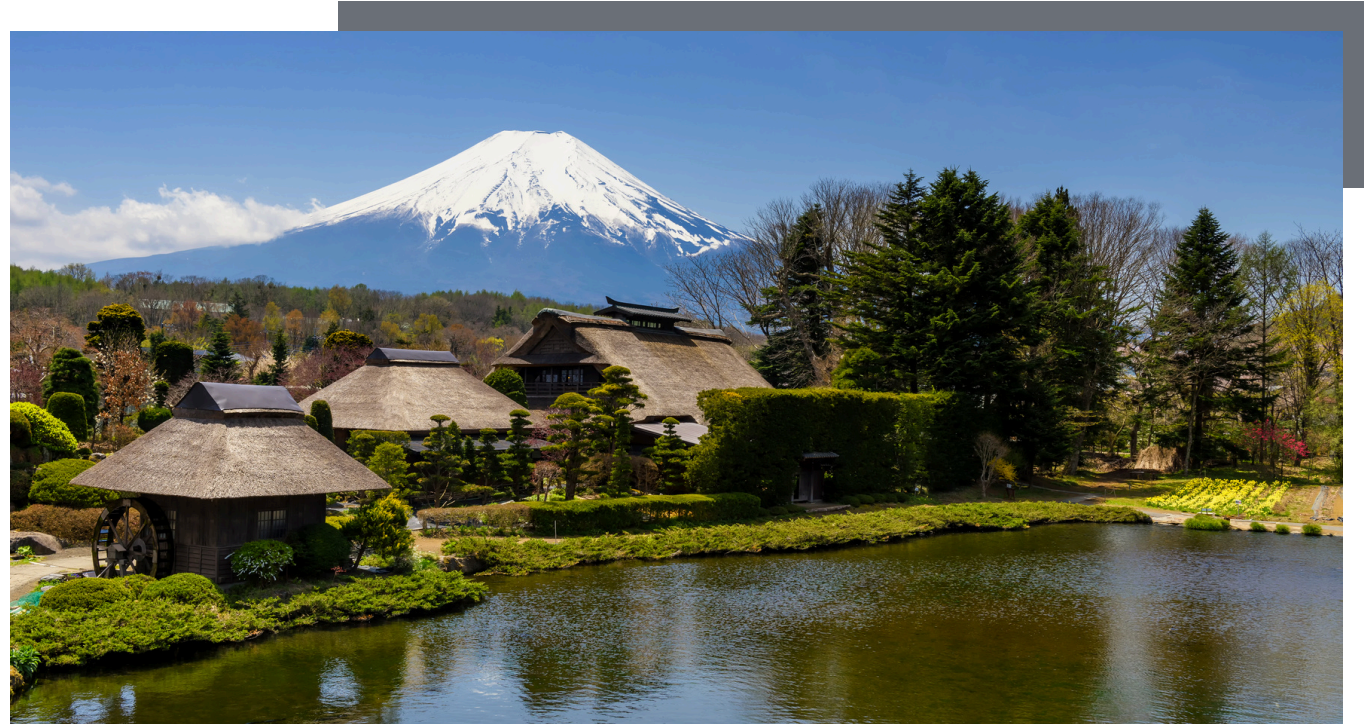




## 11:10 AM – Hikawa Clock Shop

Escape the urban hustle and bustle and enter Fuji's "Sky Ladder Town." The quiet streets leading to Mt. Fuji resemble a ladder made of clouds, with the journey's end seeming to merge with the mountain—infinately near yet untouchable. Here, you can also enjoy traditional Japanese street scenes and experience the resilient spirit of Japan's post-Meiji Restoration era, evoking memories of a time when commerce flourished.





## 12:30 AM - Oshino Hakkai

Oshino Hakkai is a collection of eight springs located in Oshino Village, Minamitsuru District, Yamanashi Prefecture. The water here is believed to be groundwater that is forced upward by high-pressure water between both the new and old Mt. Fuji volcanoes. It has been designated as a National Natural Monument, selected as one of Japan's 100 Famous Waters, and recognized as one of the New 100 Views of Mt. Fuji. In 2013, it was registered as a World Heritage site as part of the "Fujisan – Sacred Place and Source of Artistic Inspiration" group.





## Kawaguchiko Oishi Park / Kawaguchiko Cherry Blossom Festival (2024/04/05-2024/04/14)



Oishi Park, located on the northern shore of Lake Kawaguchi and home to the Kawaguchiko Natural Life Museum, is a sacred site for the Mt. Fuji pilgrimage. Together with Yagizaki Park on the southern shore, they form the renowned Lavender Park—a wellspring of inspiration and a testament to nature's beauty. As the main venue for the Kawaguchiko Festival, this park embodies the devout spirit and reverence of those journeying toward the sacred Mt. Fuji.

Within the park stands the "Mt. Fuji Assembly Memorial Monument"—a magnificent, large-scale representation of Mt. Fuji constructed from 252 rock pieces across the country, each affectionately nicknamed a "so-and-so Fuji."

---





### **3:10 PM-Lawson convenience store**

Near Lake Kawaguchi, a Lawson convenience store becomes a restful haven on your sacred Mt. Fuji pilgrimage. Here, you can pause and appreciate the seamless fusion of modern amenities with the majestic splendor of Mt. Fuji. Experience how contemporary architecture coexists effortlessly with the mountain's timeless natural beauty, offering a unique connection between tradition and modernity.

### **3:30 PM-Departure for Tokyo**

Board the coach for a comfortable ride back to Tokyo, reflecting on the day's spiritual and scenic experiences.

### **5:30 PM-Arrival in Tokyo**

Arrive at the original departure point, marking the end of your unforgettable journey to Mt. Fuji.



## Tour Highlights:

- Experience the spiritual and cultural heritage of Mt. Fuji
- Enjoy breathtaking panoramic views from Arakura Sengen Park and Oishi Park
- Explore the historic Komuro Sengen Shrine and the picturesque Oshino Hakkai
- Savor local cuisine and shop for unique souvenirs in a charming street market
- Walk through the peaceful trails of Arakura Mountain



*Join us on this extraordinary journey, where nature, history, and spirituality intertwine, creating an unforgettable Mt. Fuji experience!*



# Thanks

